



**Playgroup**  
WA (Inc)

# 2019/20

## ANNUAL REPORT







A background image featuring a close-up of a smiling woman's face on the right side and the back of a child's head on the left side. A bright blue brushstroke-like graphic element is positioned horizontally across the upper third of the page, containing the word 'CONTENTS' in white capital letters.

# CONTENTS

President's Report 2020	04
CEO's Report 2020	05
Benefits of Playgroup	06
Playgroups in WA	07
Community Playgroups	08
Supported Playgroups	11
Supporting Aboriginal Communities	12
Mother-Baby Nurture	13
Regional Work	14
Events & Communications	15
Independent Audit Report /Financial Report	18



# President's Report 2020

*"Always remember, you are braver than you believe, stronger than you seem and smarter than you think"*

Christopher Robin, Winnie-The-Pooh

It feels quite surreal to reflect back on a year of so much upheaval and uncertainty for all of us. As we embarked on the year, no-one could have predicted what lay ahead, and here at Playgroup WA we were eagerly anticipating how we would continue to support another year of play for our families.

Little did we know that the nature of that support would be to help our playgroups to respond and adjust to the shifting sands of everyday life. Knowing how important playgroup is for our connection and wellbeing, it was devastating to see them stop back in March due to COVID-19.

The Board is ever so thankful to each and every one of our team for adapting to the changes forced upon us, managing the challenges that this year has brought personally and professionally, and for continuing to support our playgroup families from a distance.

Whilst we are fortunate to be living in Perth and able to enjoy some semblance of normality, we know that things remain far from normal. Not all of our playgroups are back up and running and we know that many families are suffering hardships and remain separated from family and other social connections. We will continue to do all that we can to help our playgroups work through these challenges and to support our families.

Our vision of children and families thriving within their local communities will be a strong guiding light for the work of Playgroup WA for the remainder of 2020 and throughout 2021 as we navigate the post-COVID changes across WA.

Together – through playgroup – we look forward to helping you restore connection and play in your community.

Leanne Gordon  
President





# CEO's Report 2020

It is clearly impossible to talk about the past year without focusing on the impact of Covid 19. Apart from the ongoing health and economic upheaval that many families have had to endure, the pandemic also marked the first time in the history of playgroups in WA that playgroups were forced to cease operating face to face sessions as venues were closed by government order. When combined with 'social distancing' defining the expected behaviour of the whole population, the past year has been remarkably challenging for playgroups.

What did transpire is further proof of what playgroups bring to our community. The speed at which playgroups complied with advice to cease meeting; the innovative ways that playgroups developed to continue to support their members and their local communities; the immediate large scale engagement in our Playgroup at Home Facebook group; the enthusiasm to recommence playgroup as soon as venues reopened and the hard work undertaken to work through all the stages of lockdown easing all showed the resilience and strength of playgroups in WA.

There are however ongoing challenges for many playgroups and families. Some venues have been slower to reopen and the size of some playgroup rooms has made it difficult to cater to all the families who wish to participate. There will also be a lot of support required to re-establish the smaller playgroups with a significant number potentially staying closed until 2021.

We also know that many families have been and will continue to be severely impacted by job and business losses and travel restrictions limiting support from families and friends. Playgroup families in WA have always known the importance of social connection and 'local' support that is now being more widely recognised and we look forward to continuing to advocate for the critical role that playgroups fulfill in building local community resilience.

Like many organisations Playgroup WA made the move to working from home and coming back to the office during the period and I'd like to thank everyone for their patience and good will during this time.

*D Zarb*

David Zarb  
CEO



# Benefits of Playgroup



# 84%

*parents told us that social interaction and making new friends for both them & their kids was the best thing about playgroup*

"Joining playgroup was one of the best decisions we made for our little one. He's learning to socialise and play well with other kids and it's a fantastic group of parents"



## Affordable

Average cost of attending playgroup is \$100 a year

## Main benefits parents saw from their child going to playgroup

**Share & take turns**

**Increased vocabulary**

**Improved social skills**

**Increased physical activity**

**Imaginative & pretend play opportunities**

**Development of fine motor skills**



# 95%

of parents told us that playgroup helped to develop their child's social skills

Over 12,000 West Aussie kids are current members of Playgroup WA community playgroups

"I had a toddler and no real 'mum' friends. Since joining playgroup I could not be happier! A fabulous group of women I call friends"

6

Over half of parents told us that playgroup gave them the opportunity to take time out and have fun with their kids



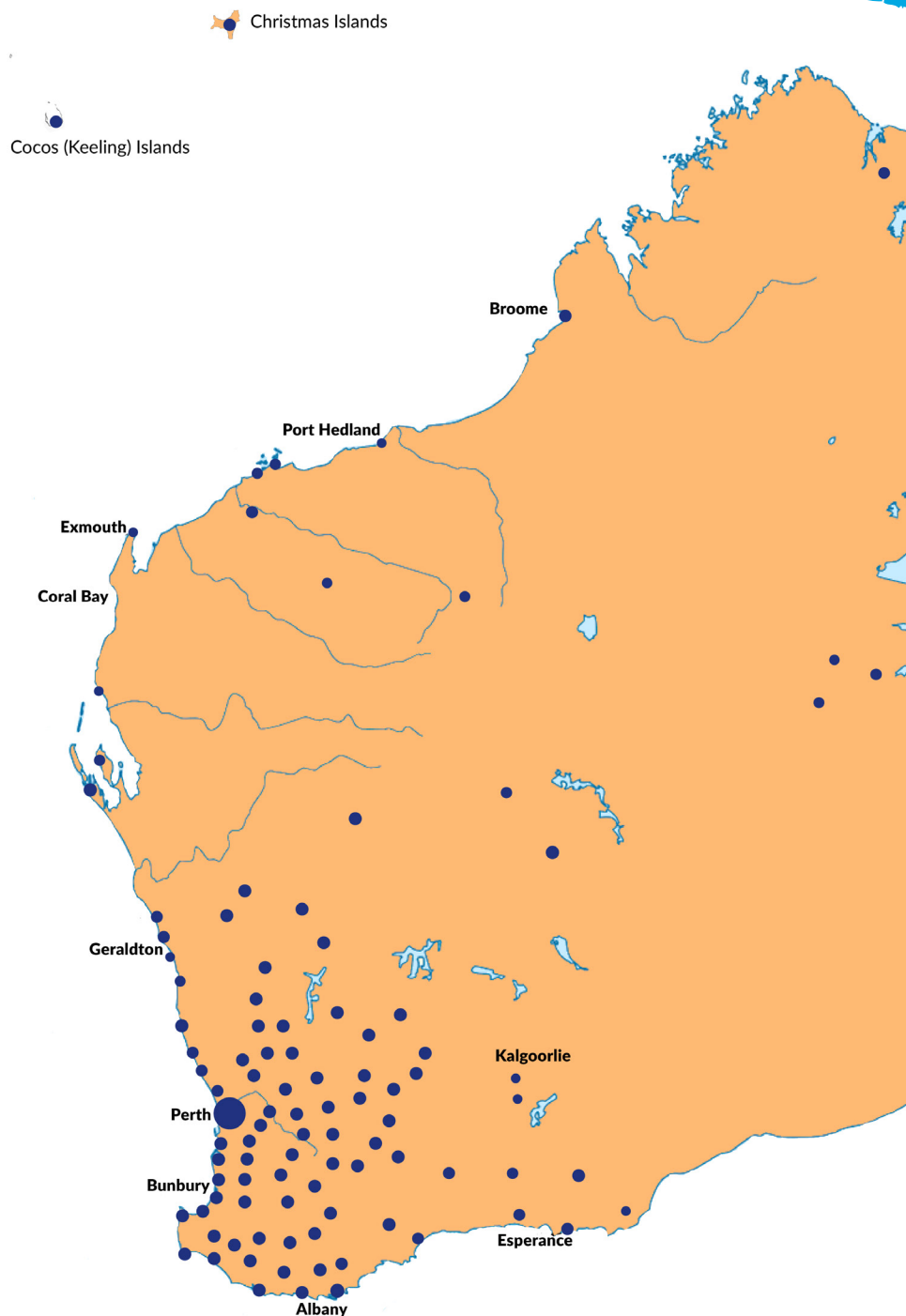
\*2019 Playgroup WA Annual Member Survey



# Thank you to all our playgroups

Playgroup WA's playgroups and support services span across many communities in Western Australia, as shown in this map. We support community playgroups, intergenerational playgroups and playgroups in schools. We deliver supported playgroups for Aboriginal families, multicultural families, and children with autism or developmental delays, as well as postnatal support groups.

Thank you to all the Western Australian families involved in running playgroups in your communities. You are amazing!







# Community Playgroups

Community playgroups, led and driven by families with young children, remain the largest group of playgroups in WA. They range in size from three or four families meeting once a week, to large groups with over 100 family members, offering multiple sessions per week. The character of playgroups is as varied as the families who participate.

Raising children in our modern world is both challenging and rewarding but made so much easier through the support of other families. Playgroups are a place where families can enjoy seeing their children learn through play and develop their social, emotional, cognitive and physical skills. Importantly, playgroups are also a place where children and families build lifetime friendships and benefit from vital peer support.

To support community playgroups, Playgroup WA provides advice and resources to assist families to establish and operate their own playgroup. This support is partially funded through our family membership fees, funding from Playgroup Australia, under the Department of Social Services Family Support Program, and the Department of Communities through their Sector Support Program.

Over the past year, our Development Officers continued to contact and visit playgroups across the state, providing information and support in a range of ways including advice about a range of playgroup management issues, links to useful resources and supporting them to provide welcoming environments for families to enjoy together. We also continued the work of providing support to

incorporated playgroups to assist them with updating constitutions in keeping with the requirements of the Associations Incorporation Act 2015 (WA). In 2020, Playgroup WA faced new challenges in responding to the many issues surrounding the emergence of the COVID-19 pandemic. Our priority shifted to supporting playgroups in responding to health and social concerns through information and advice about managing playgroup operations in these new conditions. Once face-to-face playgroup sessions were suspended, Playgroup WA worked to connect playgroup committees and members through a range of strategies including our Playgroup at Home WA Facebook group, online information sessions which provided information and discussion around COVID Safe plans and guidelines for resuming face-to-face sessions. The changes to service delivery provided an opportunity for us to engage in the work of updating a range of resources to better reflect the range of playgroups in the community and to better meet different needs.

The COVID-19 pandemic had an understandably significant impact on playgroup membership numbers with COVID-19 related venue closures and other social distancing measures coming into force prior to the annual membership renewal date of 31 March. Playgroups commenced reopening from 18 May 2020 although some venues still remain unavailable. At 31 December 2019 there were 390 individual community playgroups operating approximately 990 sessions a week across the state for approximately 8,805 families and 12,335 children.



## Intergenerational Activities Service

The Intergenerational Activities Service, through funding from the WA Department of Communities, continues to bring seniors and families with young children together to interact through play at playgroups and events. These activities help to bridge the gap between the generations, rebuilding a sense of community, understanding and respect for both older people and young families. Playgroup WA worked with and supported 52 service providers and organisations, including 19 senior service providers, 21 early learning centres and schools, and 13 community organisations. As of 30 June 2020, there were 12 member-playgroups throughout Western Australia.

At an intergenerational playgroup, families work alongside the staff of the hosting senior service to manage the playgroup. They tend to be small, intimate playgroups, providing opportunities to develop genuine friendships and relationships across generations. Families without extended family particularly appreciate the opportunity for their children to develop relationships with community elders.

Playgroup WA facilitates one Intergenerational Playgroup every six months in different sites around Perth. After six months we assist the group to become a self-managed community playgroup. Last year, Playgroup WA facilitated Intergenerational Playgroups at Aegis Shawford Lodge and Opal Murdoch. We have also partnered with Hilton Harvest and Bentley Community Gardens, the Perth Zoo and Alzheimer's WA to hold intergenerational community events.

Playgroup WA was also involved in the Ageless Play campaign, a national initiative, which included the five-week ABC television series "Old People's Home for 4 Year Olds" that debuted on 27 August 2019. This series generated significant interest in Playgroup WA's Intergenerational Activities Service from families and service providers, including early learning centres and schools. Through the initiative, 688 individual families, 21 schools and early learning centres, 13 aged care facilities, and one retirement village throughout Western Australia expressed interest and requested further information and support with intergenerational activities in their local area.

Unfortunately, conditions under COVID-19 particularly in relation to aged care settings meant that all of the playgroups and activities involving seniors in residential and day settings had to be suspended in March 2020. Interest from families and service providers in intergenerational activities remains strong and we look forward to being able to resume building these connections when we can do so safely.

*"My intergenerational playgroup doesn't just benefit my child with adopted grandparents, it also helps me with limited family support"*





## Enhanced Transition to School Project

The ETTS Project is in its sixth year as part of a state-wide strategy to improve educational outcomes through enhanced transition to starting school. This is achieved by strengthening relationships between playgroups and schools, including establishing and developing community led playgroups on school sites, and providing evidence-informed information and resources to enhance home learning environments.

An evaluation, submitted in January 2020, found the ETTS Project to be a successful universal strategy for increasing family access to low cost playgroup experiences, connecting family run playgroups with schools, increasing parent engagement, and enhancing home learning environments, all leading to positive school transition.

This year we have 124 community-led playgroups in schools offering 155 playgroup sessions. We established new playgroups in schools and assisted in transitioning school-run groups into playgroups run by the parents themselves. We have continued to facilitate linkages between schools and existing local community playgroups.

We added to our range of play resources which are tailored for babies, toddlers, 3-6 year olds, and for playgroups with multi-age groups, addressing different play types and developmental domains. We continued to promote and demonstrate these play activities during playgroup visits and events, through our marketing channels, and with relevant professional groups. Our Play Ideas page is the most visited page on the Playgroup WA website, after the Find a Playgroup page.

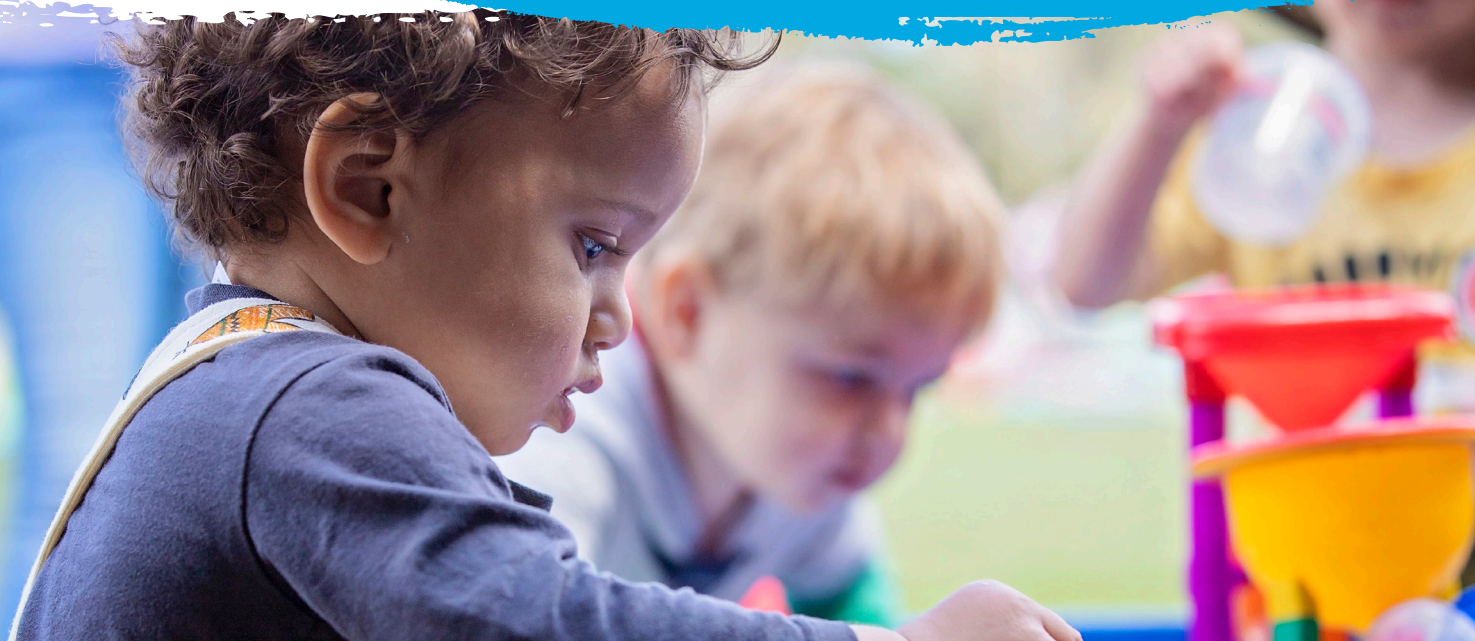
The project was initiated by the WA Steering Committee on Universal Access to Early Childhood Education and Care with funding from the Australian Government and for the first five years was delivered by Playgroup WA across the State school sector in partnership with the Department of Education, the Department of Communities, the Association of Independent Schools, and Catholic Education WA. In December 2019, the Department of Education and Playgroup WA agreed to continue to deliver the ETTS Project with a three-year contractual agreement with an option to extend for a further two years.

## Lotterywest Grants

Thanks to support from Lotterywest, Playgroup WA continued to offer financial support to community playgroups across the state. Funding of between \$500 and \$15,000 is available to support community playgroups to purchase toys, educational resources and portable equipment. Between July 2019 and June 2020, Playgroup WA received 44 applications from 42 playgroups and awarded funding to the value of \$208,576.27.

Playgroup WA values the additional opportunity for engagement with community playgroups resulting from administering the Lotterywest Grant funding. Our Development Officers work alongside each playgroup in helping them to develop their proposals, based on the specific child and adult needs, aspirations and context of the particular group. Development Officers provide information and advice about a range of elements of their application including advising on developmentally appropriate toys and equipment and suppliers.

*"We go to three different playgroups and the kids are enjoying every one of them. I can't imagine how I can manage two kids without playgroup. It's socialising, learning, relaxing, everything to me"*





# Supported Playgroups

Playgroup WA operates several supported playgroups both in the metropolitan area and regional WA. The playgroups are all based around a similar model and aim to provide opportunities for families that might experience barriers to community participation or to engage in a regular playgroup program. Through these programs, paid facilitators coordinate the playgroup activities including:

- welcoming families and helping them to feel included and informed
- planning and implementing culturally and developmentally appropriate activities and experiences
- linking families to other services and support in the local community including parenting and early intervention support

All of our supported playgroups were suspended during the COVID-19 period from mid-March and did not return to face to face playgroup sessions during the financial year. During this period, a range of alternative service delivery methods were used to continue the work of supporting and connecting families including through online groups, sessions and information as well as through the delivery of activity packs and other materials to families and communities.

## PlayConnect Program

The PlayConnect playgroups welcome families with children under school age with Autism Spectrum Disorder (ASD) or with needs related to ASD developmental delays in communication and social skills and/or behavioural and sensory issues. A formal diagnosis of ASD is not required to attend a PlayConnect playgroup. Siblings and extended family are also welcomed to participate. PlayConnect facilitators also provide quality information about Autism support services and processes. The PlayConnect program is a component of the Australian Government's Helping Children with Autism Package (HCWA).

PlayConnect playgroups meet at four locations throughout the Perth metropolitan area. At the end of Term 1, 2020, the PlayConnect South Lakes group

moved to Willetton, at a well-equipped playgroup venue. The other three PlayConnect locations are Whitfords, Forrestfield and Westminster. Each group is facilitated by experienced and skilled staff and provides flexible play opportunities tailored to the special needs of the children attending each group. Sessions generally run for two hours each week during school terms. In addition to offering developmentally appropriate play experiences for children, these sessions facilitate much valued peer and social support for parents and other adults attending.

During the COVID-19 pandemic, facilitators invited families to regular catch ups via Zoom, and they conducted short sessions where they read a story and sang songs with the children. Feedback from the parents was very positive and they felt the children responded well to the online activities. Zoom meetings also fulfilled an important aspect of the program in building support and social networks between parents and caregivers. Even though they could not meet in person, seeing friendly faces helped relieve feelings of isolation.

## Multicultural Playgroup

Playgroup WA has received funding from the Swan Alliance since 2012 to facilitate a playgroup for multicultural families in the Ellenbrook and surrounding areas as part of the Department of Social Services' Communities for Children Midland program.

In 2019-20 year, 38 families participated in the playgroup, and we welcomed families from many different cultures and nationalities. The playgroup featured a variety of languages spoken by participants with 10 different languages other than English reflected within the group. Over the last year the demographics of the group has continued to reflect trends within the broader Ellenbrook area.

Through the activities and opportunities provided in weekly playgroup sessions and via home activity packs during the COVID-19 suspension period, the playgroup continued to play an active role in supporting children's development in a range of areas including social and emotional skills, critical in helping children transition to school. Parents were able to increase their social connections within the local community.

# Supporting Aboriginal Communities

Playgroup WA continued to operate supported playgroups for Aboriginal families living in regional and remote Western Australia. Aboriginal playgroups operated in Pingelly, York, Albany and Laverton. Partnerships were established with Great Southern Noongar Aboriginal Corporation in Albany and with Pakaanu Aboriginal Corporation in Laverton with the longer term view of supporting those organisations to manage the groups at the local level and be able to apply for funding in their own right in the future. The program was funded through the National Indigenous Australians Agency's Indigenous Advancement Strategy (IAS) aimed at enhancing child development, school readiness and engagement with school, as well as enhancing the capacity of parents and other caregivers to support their children's learning and development.

Playgroup WA has worked in partnership with schools and other services, including health services, in helping families to support their children's health and wellbeing. For example, the playgroup in Laverton connected with the Ear Bus Service that already visited the school on a regular basis. Children at playgroup were able to be assessed by the Ear Bus clinic staff with follow up visits organised for any concerns identified.

A key element of the IAS program was to continue to provide employment opportunities for local Aboriginal community members. Over the past year, we have provided employment for eight Aboriginal staff members within four regional WA sites

## Ngaanyatjarra Lands

Playgroups continued to operate in the Ngaanyatjarra Lands communities of Warburton, Jameson and Blackstone. The partnership between Playgroup WA and the Ngaanyatjarra Shire to deliver playgroups in these remote communities near the border of Western Australia and the Northern Territory continued until the end of 2019.

In 2020, Playgroup WA directly employed a staff member at Warburton, where we have continued to offer five playgroup sessions each week. While funding was continued to operate playgroup

sessions in Blackstone and Jameson, unfortunately a lack of available staff members meant that were not able to re-start groups in those communities at the start of 2020. Discussions have been ongoing with Ngaanyatjarra Council staff with a view to re-establishing the playgroup in Blackstone in Semester 2, 2020.

A key outcome for the Warburton group was the strengthened partnership and collaboration with the Warburton school and local health services. This included jointly hosting a regular Mums and Bubs session at the playgroup to help engage with and support young parents in the community. Nutrition and cooking workshops were also conducted by health services during playgroup sessions. The playgroup was included in planning and other processes within the school. During the COVID-19 period, the playgroup staff member worked as part of a team with school and Shire staff in delivering alternative services for children and families in the community. This included participating in a breakfast program which also offered play activities for local children including playgroup-aged children.

## Aboriginal Play and Learning Network

Playgroup WA has continued to support the WA Aboriginal Play and Learning Network. The Network is inclusive of staff from a range of organisations including Aboriginal Community Controlled Organisations, health services, local government, schools and community organisations. The Network is aimed particularly at supporting staff, especially Aboriginal staff, working with families with children aged 0-5 years. Meetings are held quarterly and are hosted by a variety of services at different locations throughout the metropolitan area, providing an opportunity for services to showcase their programs and/or playgroups.







# Mother-Baby Nurture Groups

Playgroup WA continues to deliver perinatal and infant mental health services through Mother-Baby Nurture (MBN), which is a 10-week group program for vulnerable infants and their mothers in the first six-months postpartum. The program aims to strengthen the developing attachment relationship as well as alleviate symptoms of maternal postnatal depression and anxiety. Vital connections are nurtured between mother and baby as well as with other mothers in the group, thereby reducing social isolation. Family wellbeing is also supported through the provision of information about other local supports and services, as well as referrals as required.

This year Playgroup WA delivered 24 10-week cycles of MBN across six metropolitan sites servicing the needs of 132 vulnerable families. Sixteen were funded by the North Metropolitan Health Service (North Perth, Gosnells, Fremantle and Baldivis) and eight (Ellenbrook and Midland) were funded by the Swan Alliance; made up of Mission Australia, Ngala and Anglicare as part of

the Department for Social Services Communities for Children. The Midland MBN group was delivered in partnership with Midland Women's Health Care Place.

Most groups ran at capacity, with an average of six mothers (plus their babies) attending each 10-week group. The average attendance rate was 8.38 out of 10 sessions. During the temporary period of MBN-Online, the average attendance rate was slightly higher (8.57 out of 10 sessions). When compared to the 2018-2019 average participation rate of 8.34, these recent results reflect a continued strong interest and valuing of the service.

In response to the COVID-19 pandemic, MBN rapidly transitioned to an online format with no disruption to its weekly support service. Of the 240 weekly sessions provided in 2020, 84 (35%) were delivered online between 19 March to 3 July 2020. Feedback from MBN-Online participants was overwhelmingly positive, which bodes well for future service delivery targeting families struggling with geographical or social isolation.



# Regional Work

The Playgroup WA Development team has continued to engage with regional communities across the state, supporting community playgroups including playgroups in schools, intergenerational play activities and supported playgroups for Aboriginal families. Playgroup WA maintains a strong presence in the South West through its office in Bunbury, maintaining a comprehensive network of partnerships with community organisations and groups for the benefit of playgroups. Support for playgroups in other parts of the state is provided through the Perth based Development Team with a schedule of visits, emails, phone calls and other resources provided to assist playgroups in maintaining a strong presence in regional communities.

We also provided assistance and support to 18 regional playgroups to provide them with Lotterywest grants for toys and equipment.

## Regional Visits

Regional visits were undertaken in the period July to December 2019, however we were not able to complete any visits to regional areas in the first half of 2020 due to COVID-19 and restrictions on travel across the state.

In the second half of 2019, trips were undertaken to the East Pilbara towns of Tom Price, Newman and Parabadoo where Development Officers held Play Days in collaboration with the community playgroups in those locations and met with playgroup committee members.

A trip to the Great Southern coincided with Children's Week, enabling staff to participate in a Children's Week event in Albany organised by the Albany Early Years group. Support visits were also undertaken to playgroups in the local Albany area, as well as visits to playgroups in Cranbrook, Mt Barker, Bremer Bay, Frankland River and King River, where play events focusing on the theme of "Bring a Grandparent to Playgroup Week" were held.

Development Officers also undertook visits to playgroups in Waroona, Bolgart and Wandering during Term 4, 2019. As always, regional trips included meetings with playgroups, playgroup committees, and local service providers such as Child Health Nurses, and school staff.







## Events & Communications

### Annual Fun Day

Our annual member celebration was held on 20 November 2019 at Britannia Reserve in Mt Hawthorn. It was a great day with positive feedback and approximately 2000 people in attendance. City of Vincent Mayor, Emma Cole, spoke on stage about her personal playgroup experiences. There were a range of fun, interactive activities for the kids, with Perth Zoo, WA Museum, Gymnastics WA, Kindy Dance Time, African drums, pony rides, Brownes 'milk the cow' demonstration, animal farm, bouncy castles, face painting and more, as well as useful information for parents from a range of community organisations.

### COVID-19 impact and communications

As COVID-19 began to impact on Western Australia in March 2020, Playgroup WA provided regular information and updates to our members. This began on 11 March and continued with regular updates during the following months. On 17 March 2020, we recommended that face-to-face playgroup sessions be suspended due to COVID-19 risks. As WA gradually reopened, we provided updates and supportive information on the resumption of playgroup sessions.

We had planned four free, family community events to celebrate National Playgroup Week in late March 2020, however these were cancelled due to COVID-19 restrictions in place regarding large gatherings.

At the end of March, we launched a private Facebook group called Playgroup at Home WA, an online place for WA families with children aged 0-5 years to connect, interact and share activity ideas that can be done at home. More than 4500 members joined the group.

Our Facebook page was used as an important tool to deliver supportive information, both for Playgroup WA and other key organisations such as Child Health Nurse updates. We also established private Facebook groups for each of the PlayConnect playgroups.

We also provided support in our newsletters, on our website with a dedicated section providing COVID-19 resources for playgroups, and blog articles. Playgroup WA's Little Things Blog included information to support playgroups during the pandemic, including COVID-19 updates, how to stay connected with your playgroup (during lockdown), the launch of Playgroup at Home WA Facebook group, parenting support options, social-iso parenting tips and tips for returning to playgroup, including safety and hygiene.

## Member Communications

Throughout the year, Playgroup WA regularly communicated with our members and the public via our social media channels, website and e-newsletters. Playgroup WA's Facebook page grew to have 15,952 followers and 16,250 Likes by 30 June 2020. Our monthly e-newsletter and solus emails were sent to a subscriber database of approximately 33,000 people.

The Playgroup WA website received a 16% increase in visits compared to last financial year despite the temporary suspension of playgroups. Resources such as Play Ideas and the Building Active Bodies and Brains series were the main drivers to the page with parents most likely seeking out activities and ideas to do with their children. There were also over 9,000 Find a Playgroup enquiries submitted through our website in 2019-20 year.

Playgroup WA's Little Things Blog continued to provide articles on topics of interest to parents of children aged 0-5 years. In addition to COVID-19 support, blog articles included practical topics on child development and play activities, such as fine motor skills development, a scavenger hunt activity and homemade toys, as well as useful tips for playgroups on AGMs, fundraising and visiting aged care homes. We have also featured activities to celebrate key events such as Christmas, Mother's Day and Mental Health Week.

Support for our community playgroup committees and leaders continued with the monthly Committee Connect e-newsletter and the Committee Facebook group where members can share ideas and support each other in playgroup operations and activities.

## Partnerships

Thank you to our partners, sponsors and advertisers for their continued support over the past year, enabling Playgroup WA to support and promote important messages to families with young children throughout Western Australia.

Playgroup WA is continuing to seek partnerships and advertisers that are aligned with Playgroup WA's values and support the achievement of our strategic objectives.

## Brownes Dairy

Our partnership with Brownes Dairy enabled us to feature Playgroup WA stickers on Brownes yoghurt pouches promoting our competition to win a family staycation! The stickers were on Brownes yoghurt pouches sold in WA supermarkets for four weeks in June and July 2019. The competition was open to anyone who joined a playgroup by 5 August 2019.


## Building Active Bodies & Brains

The Building Active Bodies and Brains project, funded by the Department of Local Government, Sport and Cultural Industries, on the importance of learning fundamental movement skills for 1-5 year olds, was launched in October 2019. We created a suite of resources in consultation with experts, including videos and activities, which we housed on our website and shared on social media.

The launch took place at Wembley Playgroup, attended by Minister Mick Murray (Minister for Seniors and Ageing; Volunteering; Sport and Recreation) and Minister Simone McGurk (Minister for Community Services; Child Protection; Women's Interests), along with Playgroup WA CEO David Zarb, and was televised on Ten News. These resources gained publicity in other avenues as well, including in Maggie Dent's newsletter and on the Department of Education's website, which provided these resources for parents to be able to do with their children at home during COVID-19.

## Playgroups are for everyone!

Playgroup WA has been researching and creating resources on being inclusive at playgroup, and specifically, including families with disabilities, in a project funded by a Department of Communities grant, which will be launched later in 2020.



*"We love our playgroup, my girls have fun in a safe environment and it gives me the chance to chat and connect with other parents. it's a win win really"*





# Thank you

Thank you to our valued funders:

- Australian Government Department of Social Services
- National Indigenous Australian Agency
- Playgroup Australia
- Swan Alliance
- WA Department of Communities
- WA Department of Education
- WA Department of Local Government, Sport and Cultural Industries
- WA Mental Health Commission
- WA North Metropolitan Health Service

Thank you to our valued partners and supporters:

- Goodstart Early Learning
- Great Southern Noongar Aboriginal Corporation, Albany
- Lotterywest
- Meerilinga
- Midland Women's Health Care Place
- Pakaanu Aboriginal Corporation Laverton
- Parenting Connection
- Royal Life Saving Society WA
- St John Ambulance
- Telethon Speech & Hearing

...and all our advertisers and event supporters

**DIRECTORS:****ROBERT CAMPBELL** RCA, CA, CPA, MSW**VIRAL PATEL** RCA, CA, CPA**ALASTAIR ABBOTT** RCA, CA, M.FORENSIC ACCOUNTING**CHASSEY DAVIDS** RCA, CA, AMIA, BCOM**Playgroup WA (Inc.)**

ABN: 14 415 755 273

**Abridged audit report**

For the Year Ended 30 June 2020

**Scope**

I have audited the abridged financial report of Playgroup WA (Inc.) for the year ended 30 June 2020 as set out on the following page in accordance with Australian Auditing Standards.

**Audit Opinion**

In my opinion, the information reported in the abridged financial report of Playgroup WA (Inc.) is consistent with the annual general purpose financial report from which it is derived and upon which we expressed an unqualified audit opinion in our report to the members. For a better understanding of the entity's financial position and performance, as represented by the results of its operations and its cash flows for the year, and the scope of our audit, this report should be read in conjunction with the annual general purpose financial report and our audit report.

**Alastair Abbott CA**

Registered Company Auditor No. 486826

Australian Audit Pty Ltd

Level 8, 251 St Georges Tce PERTH, WA 6000

DATE: 19 October 2020



# Playgroup WA (Inc.)

ABN: 14 415 755 273

## Abridged financial report for the year ended 30 June 2020

	2020	2019
	\$	\$
<b>STATEMENT OF FINANCIAL POSITION</b>		
AS AT 30 JUNE 2020		
<b>CURRENT ASSETS</b>		
Cash assets	861,806	891,249
Receivables	52,353	28,609
Investments	260,105	263,960
<b>TOTAL CURRENT ASSETS</b>	<b>1,174,264</b>	<b>1,183,818</b>
<b>NON CURRENT ASSETS</b>		
Property, Plant & Equipment	9,305	6,010
Investments	1,600,000	1,600,000
<b>TOTAL NON CURRENT ASSETS</b>	<b>1,609,305</b>	<b>1,606,010</b>
<b>TOTAL ASSETS</b>	<b>2,783,569</b>	<b>2,789,828</b>
<b>CURRENT LIABILITIES</b>		
Payables	504,014	680,746
<b>TOTAL CURRENT LIABILITIES</b>	<b>504,014</b>	<b>680,746</b>
<b>NON CURRENT LIABILITIES</b>		
Provisions	26,003	20,435
<b>TOTAL NON CURRENT LIABILITIES</b>	<b>26,003</b>	<b>20,435</b>
<b>TOTAL LIABILITIES</b>	<b>530,017</b>	<b>701,181</b>
<b>NET ASSETS</b>	<b>2,253,552</b>	<b>2,088,647</b>
<b>EQUITY</b>		
Retained Earnings	602,288	499,035
Reserves	1,651,264	1,589,612
<b>TOTAL EQUITY</b>	<b>2,253,552</b>	<b>2,088,647</b>

### STATEMENT OF CHANGES IN EQUITY

Beginning Retained Earnings	499,035	515,809
Profit/(Loss) for the year	164,906	(16,774)
Transfers to reserves	(61,653)	-
Closing Retained Earnings	602,288	499,035

### STATEMENT OF PROFIT OR LOSS AND OTHER COMPREHENSIVE INCOME

FOR THE YEAR ENDED 30 JUNE 2020

	2020	2019
	\$	\$
Grants	2,245,804	2,133,440
Capital grants	-	-
Client contributions	112,782	265,897
Investment income	228	15,643
Other income	125,893	43,658
Employment expenses	(1,806,012)	(1,791,547)
Program expenses	(269,319)	(367,497)
Administration expenses	(150,147)	(205,687)
Property expenses	(57,180)	(40,131)
Promotional expense	(30,438)	(62,505)
Depreciation	(6,705)	(8,045)
<b>Deficit from operating activities</b>	<b>164,906</b>	<b>(16,774)</b>
Other comprehensive income	-	-
<b>Total comprehensive income for the year</b>	<b>164,906</b>	<b>(16,774)</b>

### STATEMENT OF CASH FLOWS

FOR THE YEAR ENDED 30 JUNE 2020

<b>Cash flows from Operating Activities</b>		
Receipts from operations	2,459,807	2,454,668
Payments to suppliers and employees	(2,480,406)	(2,620,235)
<b>Net cash used in operating activities</b>	<b>(20,599)</b>	<b>(165,567)</b>
<b>Cash flows from Investing Activities</b>		
Acquisition of property, plant and equipment	(10,000)	-
Interest received	1,156	4,941
<b>Net cash used in investing activities</b>	<b>(8,844)</b>	<b>4,941</b>
<b>Cash flows from Financing Activities</b>		
Receipts from capital grants	-	-
<b>Net cash generated by financing activities</b>	<b>-</b>	<b>-</b>
<b>Net decrease in cash and cash equivalents</b>	<b>(29,443)</b>	<b>(160,626)</b>
Cash and cash equivalents at the beginning of the financial year	891,249	1,051,875
<b>Cash and cash equivalents at the end of the financial year</b>	<b>861,806</b>	<b>891,249</b>

### NOTES

The Abridged Financial Report has been derived from the audited general purpose financial report that is prepared in accordance with note 1 to that report.



## **Playgroup WA**

Tel: 08 9228 8088 or 1800 171 882

Web: [www.playgroupwa.com.au](http://www.playgroupwa.com.au)

Office Hours: Monday to Friday, 9am to 4.30pm

